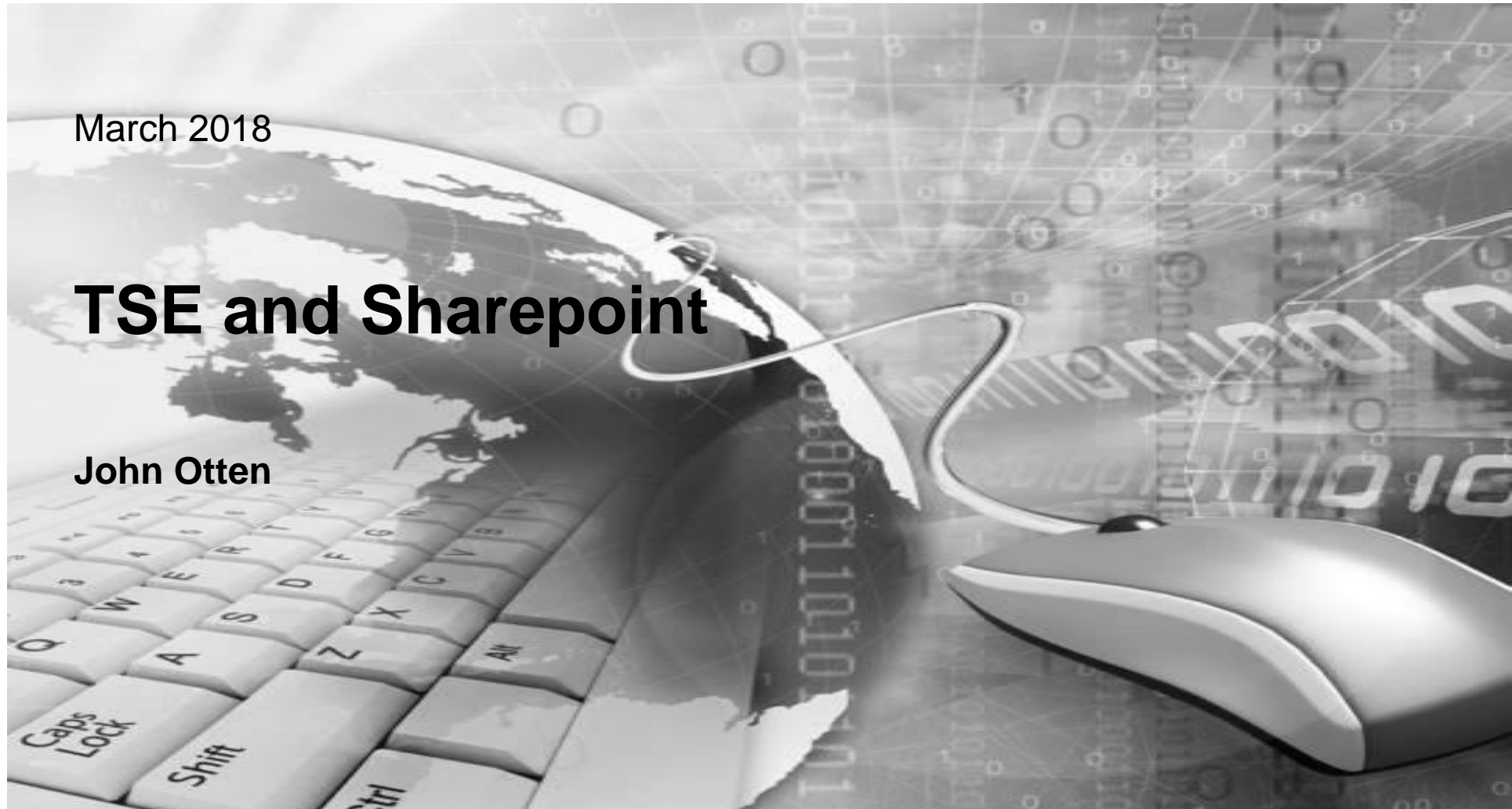


March 2018

# TSE and Sharepoint

John Otten



## Sharepoint – Old

In use since approx. 2010. R&D was an early adopter.

**Public accessible Team Spaces**

Location	Owner	Webmaster(s)
Continuous Surface Improvements	Hvid, Lene	Andersson, Robert
Process Modelling and Fluid Dynamics	Plas, Dirk van der	Beunder, Liesbeth; Oord, Sjaak van
The importance of being data	Verhoeven, Raymon	Verhoeven, Raymon
Global Researchers' Workplace	Bootsma, Lute	Fiedler, Nadine
Innovation Team Space	Das, Sumitesh	Craig, Neil
R&D Talk	Otten, John	Otten, John
OGSM	Hoogen, Arjan van den	Dodds, Ray
Yield improvement	Peeters, Tim	Peeters, Tim
Recognition & Award	Hvid, Lene	Matthews, David
MGM Idea Generation and Technology Leadership	Otten, John	Otten, John
R&D – PA Funding co-ordination	Moonen, Wim	
Request Production Data	Moonen, Wim	Aartsen, Henk
Ferrous Materials Group	Otten, John	
Swinden Housing Association	Pike, Simon	Craig, Neil; Lochrie, Linda

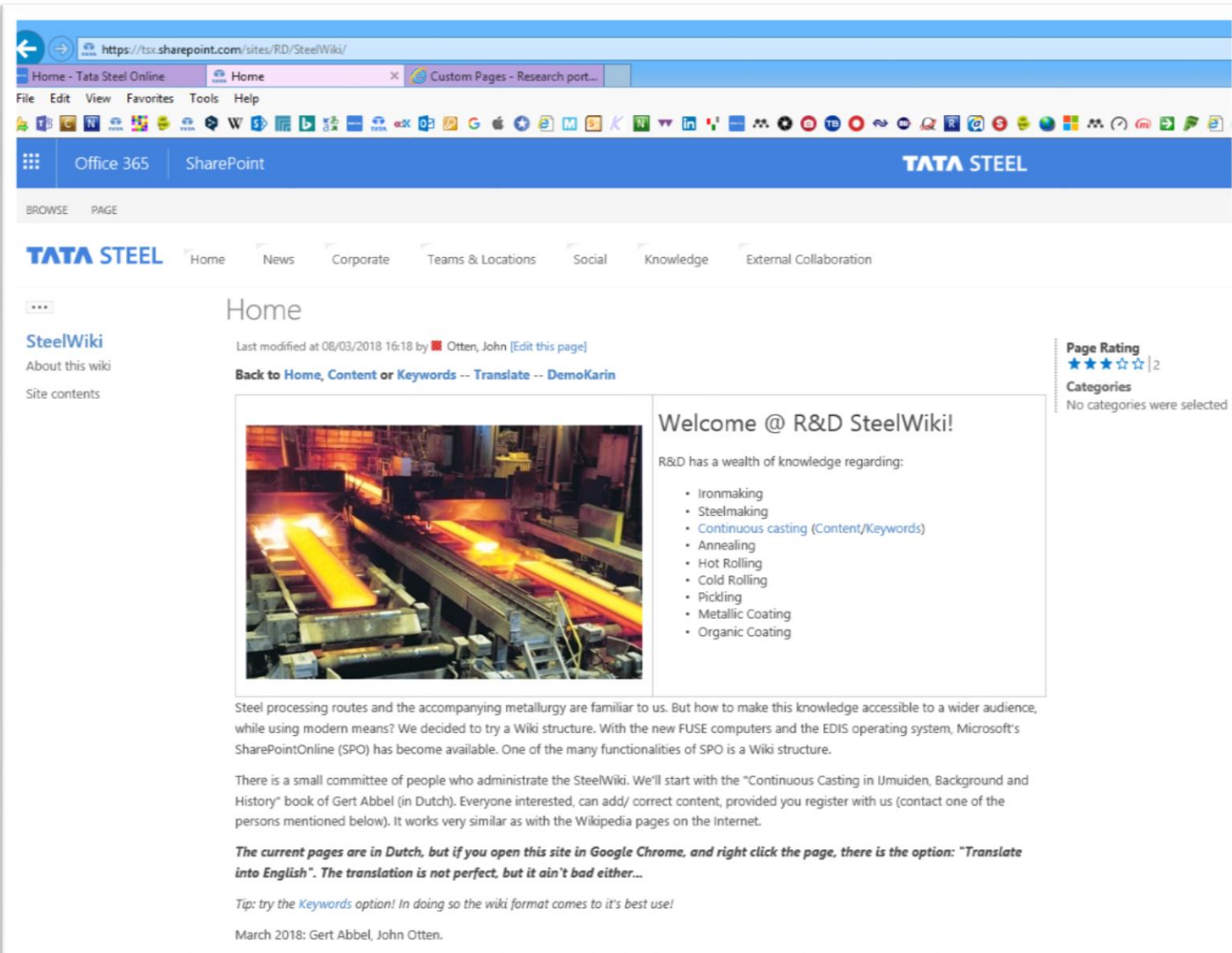
  

**Projects related Team Spaces**

Location	Owner	Start date	Webmaster(s)	Status
Continuous Surface Improvements	Hvid, Lene	18/01/2010	Andersson, Robert	Running

- Several SP applications in the old version of 2007. 150+ (...)
- Now we have SP Online – difficult to get people to move from the old system to the new one.
- The TSE Library (KLS) has some experience in setting up simple sites. More complex sites we refer to our IT department or to external developers.

## Sharepoint – New



Home

Last modified at 08/03/2018 16:18 by ■ Otten, John [Edit this page]

[Back to Home](#), [Content](#) or [Keywords](#) -- [Translate](#) -- [DemoKarin](#)

**Welcome @ R&D SteelWiki!**

R&D has a wealth of knowledge regarding:

- Ironmaking
- Steelmaking
- [Continuous casting \(Content/Keywords\)](#)
- Annealing
- Hot Rolling
- Cold Rolling
- Pickling
- Metallic Coating
- Organic Coating

Page Rating  
★★★★☆ | 2  
Categories  
No categories were selected

Steel processing routes and the accompanying metallurgy are familiar to us. But how to make this knowledge accessible to a wider audience, while using modern means? We decided to try a Wiki structure. With the new FUSE computers and the EDIS operating system, Microsoft's SharePointOnline (SPO) has become available. One of the many functionalities of SPO is a Wiki structure.

There is a small committee of people who administrate the SteelWiki. We'll start with the "Continuous Casting in IJmuiden, Background and History" book of Gert Abbel (in Dutch). Everyone interested, can add/ correct content, provided you register with us (contact one of the persons mentioned below). It works very similar as with the Wikipedia pages on the Internet.

**The current pages are in Dutch, but if you open this site in Google Chrome, and right click the page, there is the option: "Translate into English". The translation is not perfect, but it ain't bad either...**

*Tip: try the [Keywords](#) option! In doing so the wiki format comes to it's best use!*

March 2018: Gert Abbel, John Otten.

- The new system is way easier to use (in my opinion).
- Yet we have difficulty to get people to transfer. Most probably due to work involved.
- Also more options, due to Office365 applications, like: Teams, Forms, OneNote, OneDrive, etc.